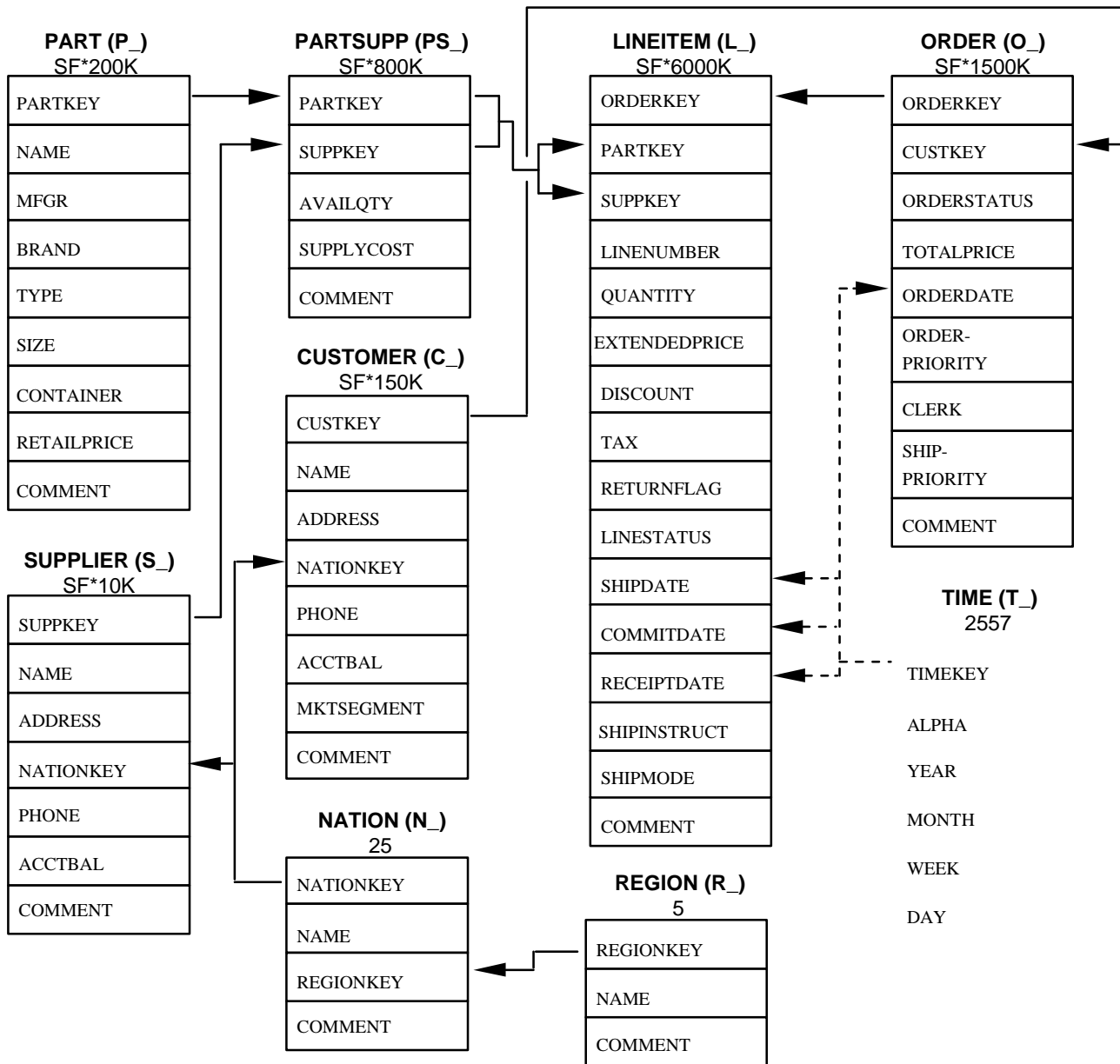


Figure 2: The TPC-D Schema



Legend:

- The parentheses following each table name contain the prefix of the column names for that table;
- The arrows point in the direction of the one-to-many relationships between tables;
- Dashed lines represent optional tables and relationships;
- The number/formula below each table name represents the cardinality (number of rows) of the table. Some are factored by SF, the Scale Factor, to obtain the chosen database size (K means one thousand). The cardinality for the LINEITEM table is approximate (see Clause 4.2.5).